

# Passeclair®

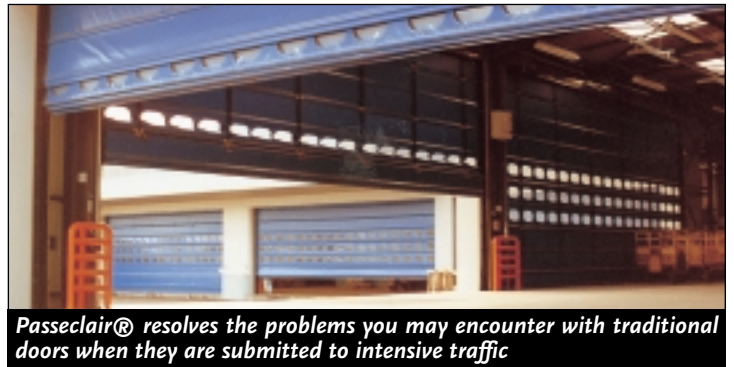


**HIGH-SPEED FOLD-UP DOOR  
USE: EXTERNAL/INTERNAL DOORWAYS**

- *High wind resistance Passeclair is the only external high-speed door for large openings*
- *Contributes to save on energy charges*

**maviflex®**

*The Leader in Traffic Doors*



## Main characteristics

### Unique folding design :

- The self-supporting metal structure comprises two side guide rails and upper assembly containing the roller shaft, brake motor and safety mechanism, which supports the polyester fabric curtain, stiffened by horizontal metal bars inserted into the fabric.
- When opening, straps lift the curtain in a concertina manner.
- The safety mechanism activates and the door stops at the top. The curtain descends to the floor automatically after the variable pre-set timer.

### Frame

- Self supporting steel frame with polyester powder coating grey RAL 7016.
- Other RAL colours on request.

### Curtain

- Support : 100% high-strength Polyester fabric, with double -sided PVC coating.
- Weight : 670 g/sgm
- Tear strength (wrap / weft): 25daN
- Treatments : UV and mildew. Finish : acrylic varnish.
- Cold crack temperature : -25° C
- Available in 18 RAL colours.
- Fabric curtain reinforced with horizontal strengtheners to provide

de maximum wind resistance.

- PASSECLAIR curtain is conceived to withstand high winds and differential pressure conditions.

### Options :

- Oblong windows (one or more rows).
- Maxivision Curtain 70% transparent.
- Company logo painted in corporate colours.
- Fabric with flame retardancy class M2.
- Double skin within insulating foam.

### Lifting straps

- Attached directly to roller shaft
- Break strength resistance : 4000 daN per strap

### Peripheric weatherseals

- Bottom sleeve seal , weather resistant.
- The exclusive curtain design reduces the gap between the curtain and the uprights.
- Operates under high winds.
- **Option** : superseal brushstrip on : top and side frame.
- Use : external or internal applications.
- An excellent noise, dust and weather barrier.

## Reliability

- Intensively tested on fatigue for more than 3000 opening/closing cycles a day.
- In case of obstruction , the curtain will reverse instantly.
- The horizontal windbars are shock-resistant without stopping the use of the door.

### Barrier data

- Thermal insulation :  $K=5 \text{ Watt/m}^2/\text{°C}$
- Excellent thermal separation.
- Sound attenuation : 16 dBA
- An excellent noise, dust and weather barrier.

### Multiple safety devices

- Passeclair complies with NFP 25-362 safety standard.
- Passeclair high-speed fold-up door standard features include:
- Soft bottom edge technology (No more trouble some rigid bottom edge electronic).
- Instant reverse and fail safe dual safety photocells.
- Passeclair is equipped with two frame-mounted photo-cells for added safety preventing the curtain from closing if a vehicle or person is standing in the opening. Should the beam be broken during the closing cycle, the curtain will reverse automatically.



Size 5000 x 12000



Size 4000 x 12000

- Security straps provide security in the event of a lifting strap failure.
- Warning lights flash during the activation of the door.

**Option :** In case of power cut or motor failure the door can still be opened manually by crank on motor.

- Opening by crank operated from floor level.

## Clear dimensions

- For external or internal openings up to : 10 m wide x 8 m high.  
Please consult us for bigger sizes.

## High-speed operation

- The opening and closing speed of Passeclair is 1m/second.

## Gear brake motor

- One speed motor.
- Electrical power 0.75 kW to 4 kW
- Sealing protection : IP 54

## Power supply

- 240 or 400 V, 50Hz three phase with earth without neutral.

## Control box

CE Mark

- Sealing protection: IP 55
- Protected power cut-off switch.

- Key switch for automatic or manual operation.
- Plug-in Electro-mechanical printed circuit for minimum maintenance.
- Timer controlled (between 1 to 30 seconds) closing facility.
- Cycle counter.
- Main components: Telemecanique 50-60 Hz.
- Operating at 24V AC for increased safety.

## Options :

- Control Box IP 66.
- Two opening heights, useful over 5 m height.
- Programmed Airlock application between two doors.

## Opening controls

- Manual Controls :

Opening and closing by holding down the push-button, pull cord switch...

- Automatic Controls :

Induction loop detector, hand-held radio , radar, photocells...

Closing time can be set between 1 and 30 seconds.



Size 9000 x 7000

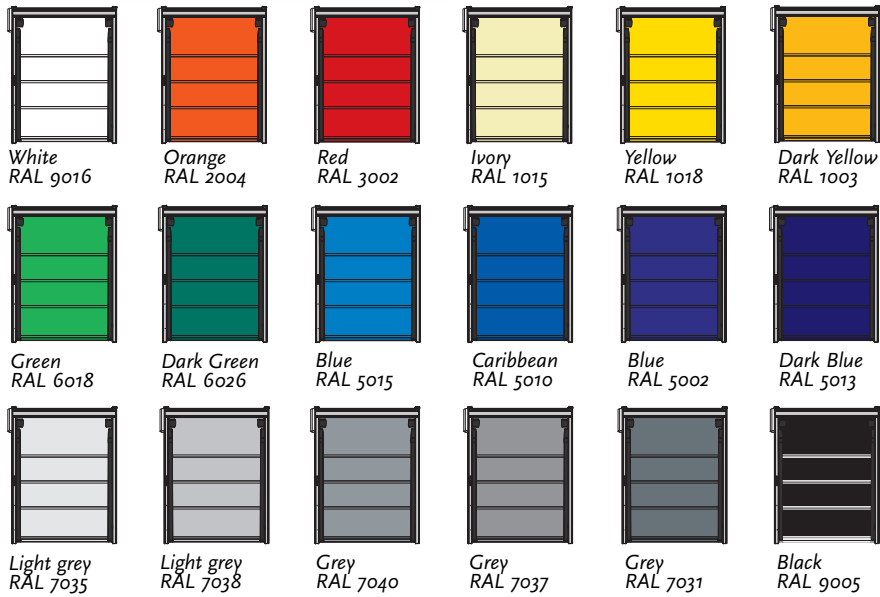


Added to a roller shutter

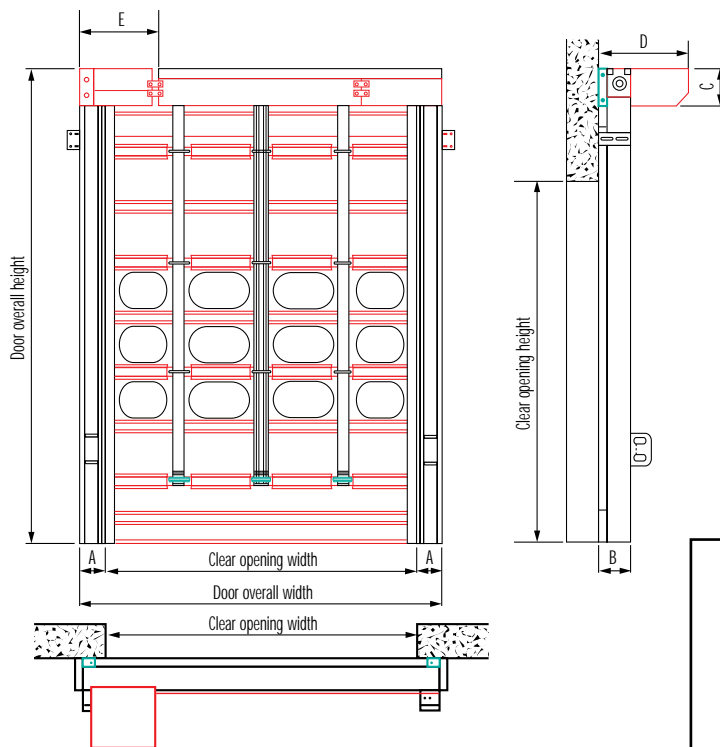


Full see-through curtain maxivision

## Match Your Corporate Colours with 18 Frame and Curtain Colours Available



## Clearance and space requirements



	A	B	C	D	E	Maximum dimensions (L x H)
A60 Model	140	215	240	575	490	4000 x 4000
A100 Model	150	260	305	680	650	6000 x 6000
A200 Model	on request					10000 x 8000

## Visibility : 5 configurations

